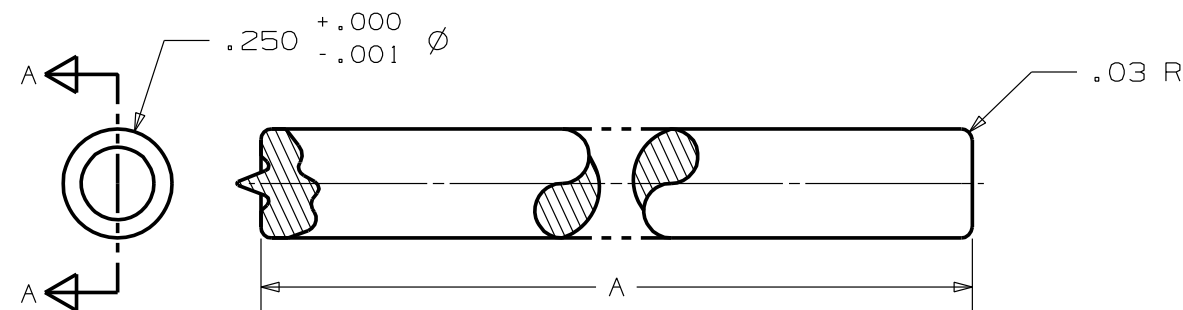


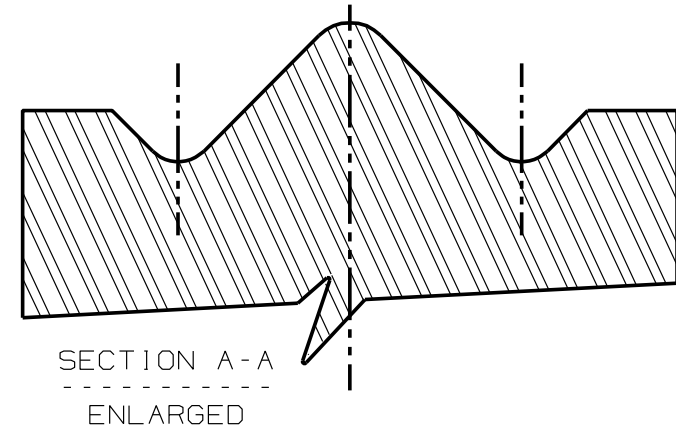
1100132-X

Rev.

APPLICATION DRAWING



DASH No.	DIM "A"
-1	2.25
-2	3.00



NOTE :

1. CURLING PUNCH WORKS ON .020-.032" THICK PCP'S
2. OTHER LENGTHS AVAILABLE UPON REQUEST

FOR CURLING
TERMINAL NUMBER

144	148	150	160	169	173
179	190	202	204	237	239
241	253	261	294	332	338
357	392	400	421	489	490
491	584	609	728	764	765
831	848	849	864	938	939

RoHS COMPLIANT

MATERIAL: .01 TOOL STEEL

ZIERICK

Radio Circle Drive
Mount Kisco, New York 10549

CURLING PUNCH, EYELET

Zierick Product Related Recommendations are general guidelines only. Since each customer's design, process and application is different it is necessary that customers thoroughly test our products in specific applications.

THIS DOCUMENT AND THE CONFIDENTIAL INFORMATION CONTAINED HERE ARE THE PROPERTY OF ZIERICK MANUFACTURING CORPORATION AND MAY NOT BE USED IN WHOLE OR IN PART IN ANY WAY, OR COMMUNICATED TO ANY PARTY OTHER THAN THE RECIPIENT WITHOUT THE EXPRESS PRIOR WRITTEN CONSENT OF ZIERICK MANUFACTURING CORPORATION.

1100132-X